

TECHNICAL HIGHLIGHTS

Structure	: RCC framed structure with M20 Grade of concrete and Fe 500 grade steel, Fly Ash bricks neatly finished with CM1:5 plastering.
Main Doors	: Teak wood frames with Flush Door Teak veneer polished door/equivalent.
Other Doors	: Country Wood frames with Flush door painted finish/equivalent
Floors	: Premium vitrified tiles flooring in living room, dining room, bedrooms.
Windows	: UPVC Windows with MS safety grills for all windows.
Finishes	: 2 coat of putty + 1 coat of premier & 2 coats of premium Emulsion paint.
Grills	: Zinc chromate non corrosive primer with enamel paint.

KITCHEN

Floors	: Premium vitrified tiles.
Walls	: Tiles up to lintel level
Finishes	: 2 cost of putty + 1 coat of primer & 2 coats of premium Emulsion paint.
Platform	: Table top with SS Sink + Bowl + Tap with drain board.
Plumbing Provision	: Aqua Guard Provision, Wash Basin with tap at Dining.

TOILET

Floors	: Anti skid tile flooring for all bathrooms
Walls	: Wall tiles upto ceiling height
Doors	: Wooden frame with PU coated doors/ equivalent
Sanitary Fittings	: Parry ware/ Jaguar or equivalent
CP Fittings	: Parry ware/ Jaguar or equivalent

ELECTRICAL FIXTURES & FITTING

Power Supply	: 3 Phase power supply will be provided
Cables/wires	: Finolex/Havells (or) ISI approved branded cables
Modular Switches	: MK/Legrand or equivalent
MCB, ELCB & DB	: MK/Legrand or equivalent
Standard Electrical Provisions Annexed.	

AMENITIES

- Power backup in all common area and lift provided by the Developer.
- CCTV Camera & Intercom provided by the Developer.

LOTUS INFRAA DEVELOPERS & PROMOTORS has been successfully delivering residential, commercial projects for many years at prime locations in coimbatore.

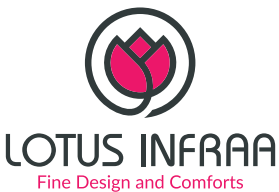
Every project is made inimitable and to stand out from others, like a masterpiece, making the owners proud and delighted, while increasing their standard of living.

Sustainable design with eco-friendly architecture is the attribute of all LOTUS INFRAA Projects.

LOCATION MAP



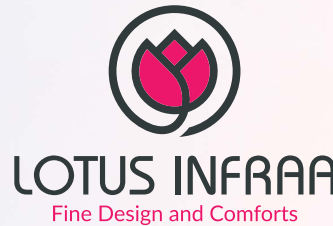
For Booking : 63696 59428



Promoted by
LOTUS INFRAA
Developers & Promoters
Lotus Star, 15A, Krishnasamy Nagar, 2nd Street 50 Feet Road,
Ramanathapuram, Coimbatore - 641 045.

Voice : +91 87788 27560,
+91 63696 59428
lotusinfraa@outlook.com
www.thelotusinfra.in

www.thelotusinfraa.in





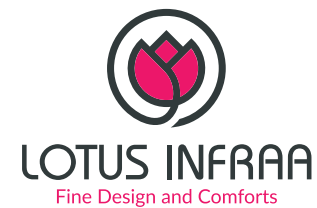
2BHK
6 PREMIUM
APARTMENTS



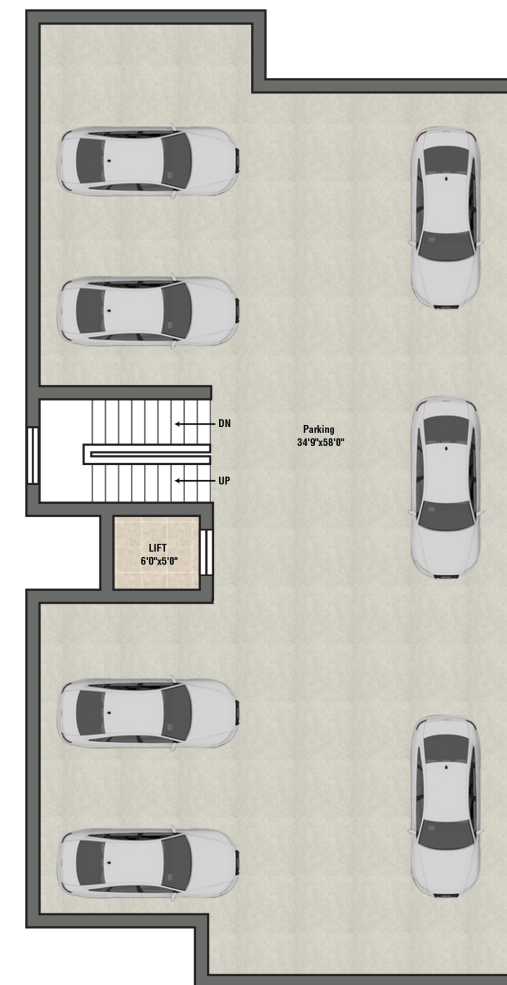
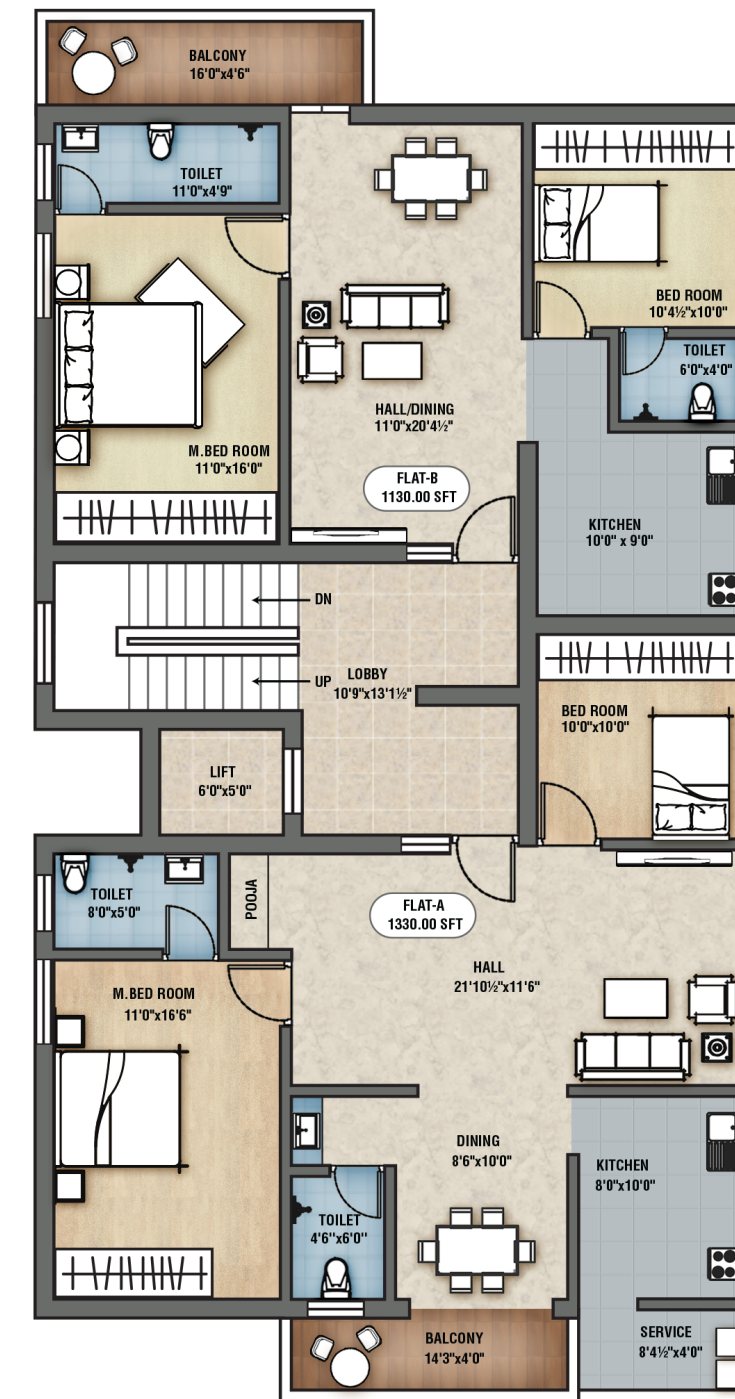
We respect your need for privacy.
We understood your tastes for fine design and comforts.
Your wish became our command.

Lotus Sunshine houses 6 premium luxury apartments in 3 floors with total vastu compliance. Lotus Sunshine located at one of the best residential domain - Nethaji Nagar, Nanjundapuram Road, Ramanathapuram, Coimbatore.

Disclaimer : Saleable area includes plinth area of the residential Complex, including walls and external finish and a proportionate share of all common areas, common amenities and service. Whilst every care has been taken in the preparation of this brochure, the promoter(s) reserve their rights to make alterations, amendments including additional constructions on the building/property as may be necessitated/permitted from time to time. The promoter(s) reserve the rights to add/delete any facility, specification or amenity at the time of execution of the agreement of sale of the residential Complex. This brochure does not form any inclusion in the legal documents and purely for information only. Photographs displayed in this brochure are for illustration purpose only.



TYPICAL FLOOR PLAN



Flat A - 1330 sq.ft
North facing

Flat B - 1130 sq.ft
South facing

